



D、DX、DT 系列

D、DX、DT Series

特点 Features

- 常规通用
General purpose
- 安装方便
Easy to install

应用 Applications

- 用于各种电子设备和电子测量仪器
Available for electronic equipments and measuring instruments

技术参数 Technical Data

额定电压 Rated Voltage	250VAC
工作频率 Operating Frequency	50/60Hz
额定电流 Rated Current	1A-200A
耐压试验:(一分钟) Test Voltage (1min)	1500VDC (line/line) 1500VAC (line/ground)
气候类别 Climatic Category	25/085/21

型号 Model	端子方式 Terminal		额定电流 Rated Current (A)	接地电容量 Ground Capacitance (nF)	泄漏电流 Leakage Current ≤(mA)	放电电阻 Discharge Resistance (MΩ)	电路图 Circuit Diagram fig.	外形尺寸 Dimension fig.
	入 Input	出 Output						
* DL-1D3	⏏	⏏	1	4.7	0.8		2	3
* DL-1D31	⏏	⏏	1	2.2	0.5		1	1
* DL-2D1	⏏	⏏	2	3.3	0.5		1	2
* DL-2D13	⏏	⏏	2	3.3	0.5		2	2
* DL-2D3	⏏	⏏	2	3.3	0.5		1	3
DL-3D1	⏏	⏏	3	3.3	0.5		1	2
DL-3D3	⏏	⏏	3	3.3	0.5		1	3
* DL-6D1	⏏	⏏	6	3.3	0.5		1	10
* DL-6D11	⏏	⏏	6	3.3	0.5		1	2
* DL-6D3	⏏	⏏	6	3.3	0.5		1	3
* DL-10D	⏏	⏏	10	3.3	0.5	1.5	3	10
* DL-10D36	⏏	⏏	10	2.2	0.5		1	3
DL-15D1	⏏	⏏	15	3.3	0.5	1.5	2	10



型号 Model	端子方式 Terminal		额定电流 Rated Current (A)	接地电容量 Ground Capacitance (nF)	泄漏电流 Leakage Current ≤(mA)	放电电阻 Discharge Resistance (MΩ)	电路图 Circuit Diagram fig.	外形尺寸 Dimension fig.
	入 Input	出 Output						
DL-15D11			15	3.3	0.5	1	2	5
DL-15D3			15	3.3	0.5	1.5	2	6
*DL-20D11			20	4.7	0.8	0.44	2	5
*DL-20D3			20	3.3	0.5	1.5	2	6
*DL-20D32			20	3.3	0.5	1.5	2	4
DL-25D1			25	3.3	0.5	1.5	2	5
DL-30D1			30	3.3	0.5	1.5	2	5
DL-30D11			30	4.7	0.8	1.5	1	5
DL-30D3			30	3.3	0.5	1.5	2	7
DL-35D3			35	4.7	0.8	1.5	2	7
DL-50D3			50	4.7	0.8	1.5	2	7
DL-60D3			60	4.7	0.8	1.5	2	7
DL-100D3			100	6.8	1.0	1.5	2	8
DL-100D31			100	6.8	1.0	1.5	2	12
DL-120D3			120	6.8	1.0	1.5	2	8
DL-150D1			150	6.8	1.0	1.5	2	9
DL-150D3			150	6.8	1.0	1.5	2	8
DL-200D1			200	6.8	1.0	1	2	9
*DL-1DX13			1	2.2	0.5		1	13
*DL-1DX31			1	4.7	0.8		2	14
*DL-1DX32			1	4.7	0.8		2	14
*DL-1DX33			1	2.2	0.5		1	14
*DL-2DX			2	2.2	0.5		1	15
*DL-2DX31			2	2.2	0.5		1	14
DL-3DX31			3	2.2	0.5		1	14
*DL-6DX1			6	2.2	0.5		1	16
*DL-10DX1			10	2.2	0.5		1	16
DL-20DX1			20	3.3	0.5	1.5	2	17
DL-20DX11			20	3.3	0.5	1.5	1	18
*DL-3DT			3	3.3	0.5	1.5	4	19
*DL-6DT			6	3.3	0.5	1.5	4	19
DL-8DT			8	6.8	1.0	0.15	4	20
*DL-10DT			10	4.7	0.8	0.47	3	21
*DL-16DT			16	22	2.0	0.68	3	22

*: VDE APPROVAL



电原理图 Typical Circuit Diagram

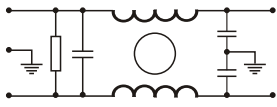


fig.1

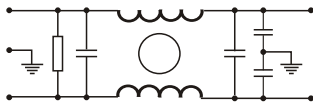


fig.2

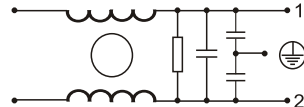


fig.3

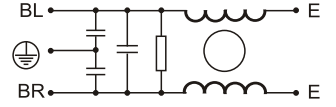


fig.4

外形尺寸 Outline Drawing and Dimensions (mm)

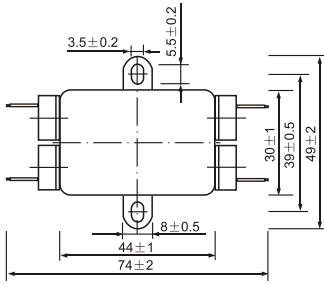


fig.1

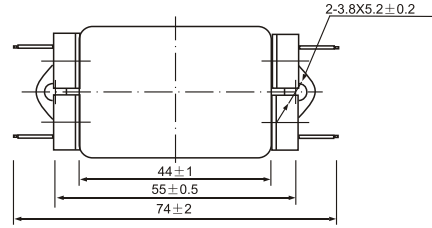
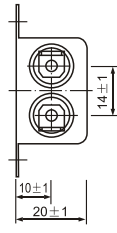


fig.2

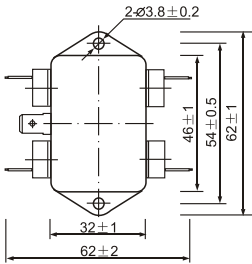
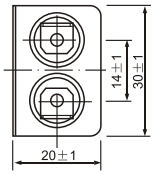


fig.3

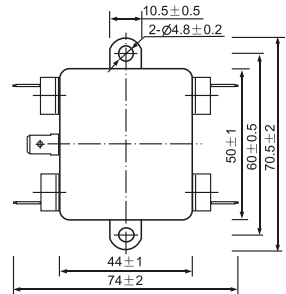
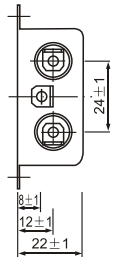


fig.4

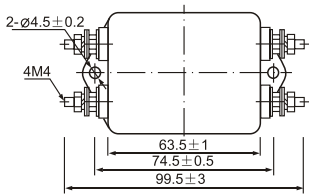
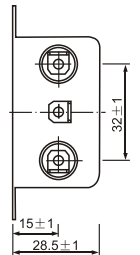


fig.5

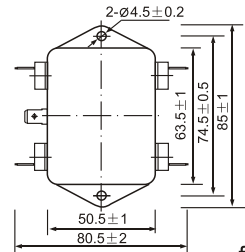
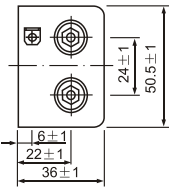


fig.6

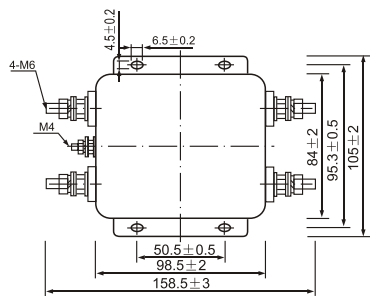
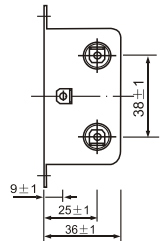


fig.7

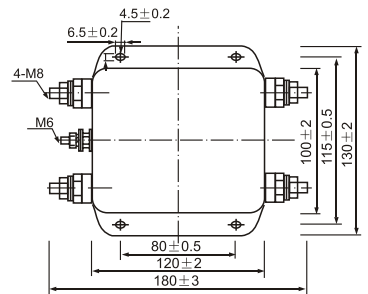
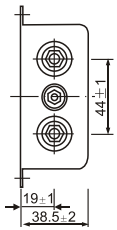


fig.8

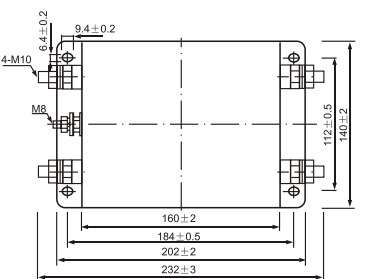
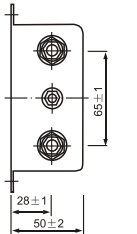


fig.9

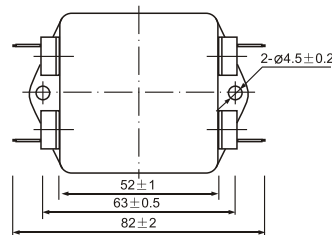
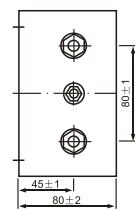
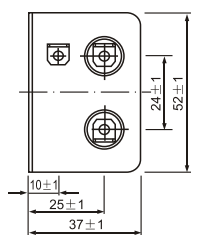


fig.10



注: 150DI端子为M8



插入损耗 Insertion Loss in dB

(50 Ω 测量系统, IEC/CISPR No. 17 号出版物 Measured in 50 Ω system, as IEC/CISPR No. 17)

