



T 系列

T Series

特点 Features

- 高性能电源滤波器
High performance filters
- 泄漏电流小
Low leakage current

应用 Applications

- 用于大多数数字设备(尤其是开关电源), 可用来抑制连续或间隙性脉冲干扰, 尤其适用于低阻抗负载场合。
T Series are available for digital systems(particularly for switching power supplies) to suppress the continuity or intermittent pulse interference.T Series are well suited for low impedance loads environments exist

技术参数 Technical Data

额定电压 Rated Voltage	120/250VAC
工作频率 Operating Frequency	50/60Hz
额定电流 Rated Current	2A-80A
耐压试验:(一分钟) Test Voltage (1min)	1500VDC (line/line) 1500VAC (line/ground)
气候类别 Climatic Category	25/085/21

型号 Model	端子方式 Terminal		额定电流 Rated Current (A)	接地电容量 Ground Capacitance (nF)	泄漏电流 Leakage Current ≤(mA)	放电电阻 Discharge Resistance (MΩ)	电路图 Circuit Diagram fig.	外形尺寸 Dimension fig.
	入 Input	出 Output						
DL-2T1			2	2.2	0.5	1	1	1
DL-3T1			3	3.3	0.5	1.5	1	1
DL-3T3			3	3.3	0.5		3	2
* DL-6T1			6	3.3	0.5	1.5	2	1
DL-6T12			6	3.3	0.5	1	2	3
DL-8T1			8	4.7	0.8	1	2	4
* DL-10T1			10	3.3	0.5	1.5	2	1
DL-10T11			10	3.3	0.5	1	2	3
DL-10T12			10	4.7	0.8	1	2	4
DL-12T1			12	4.7	0.8	1	2	4
DL-15T1			15	3.3	0.5	1.5	2	5
DL-16T12			16	3.3	0.5	0.68	2	9
* DL-20T1			20	4.7	0.8	1.5	2	6
* DL-20T3			20	3.3	0.5	1.5	4	7
DL-25T11			25	3.3	0.5	0.68	2	10
DL-30T11			30	3.3	0.5	0.68	2	10
DL-50T3			50	6.8	1.0	1.5	2	8
DL-80T1			80	4.7	0.8	0.68	2	11

*: VDE APPROVAL



电原理图 Typical Circuit Diagram

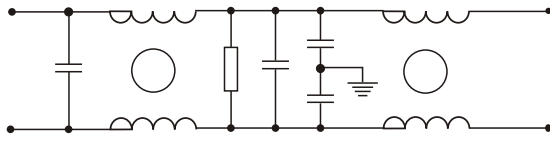


fig.1

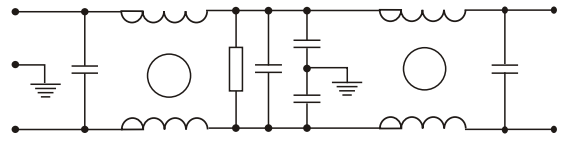


fig.2

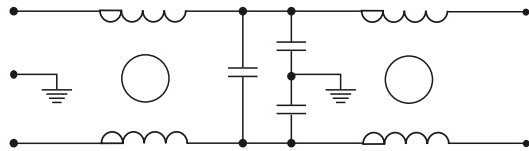


fig.3

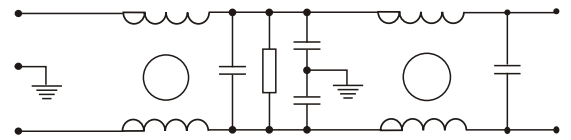


fig.4

外形尺寸 Outline Drawing and Dimensions (mm)

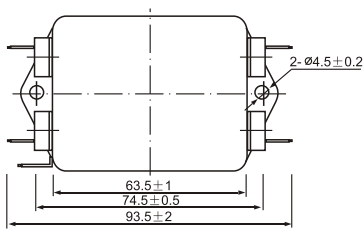


fig.1

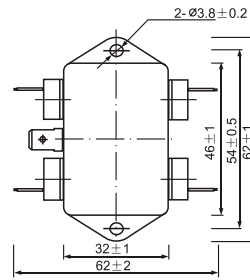


fig.2

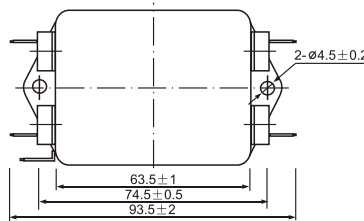
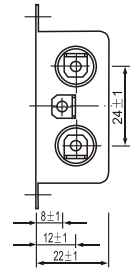


fig.3

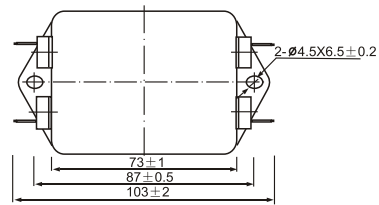


fig.4

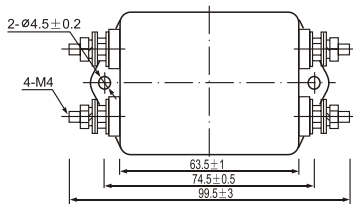
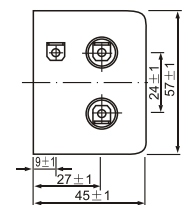


fig.5

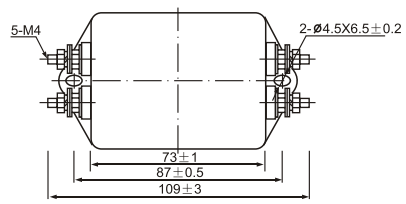


fig.6

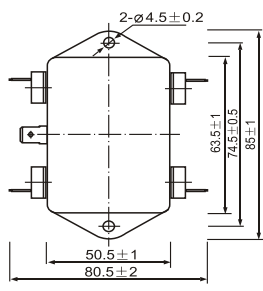
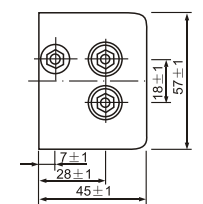


fig.7

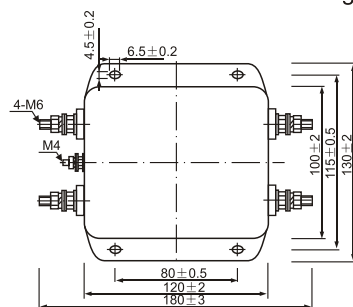
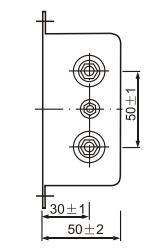


fig.8



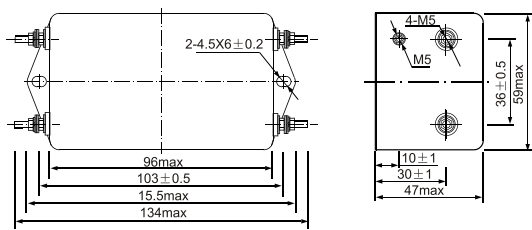


fig.9

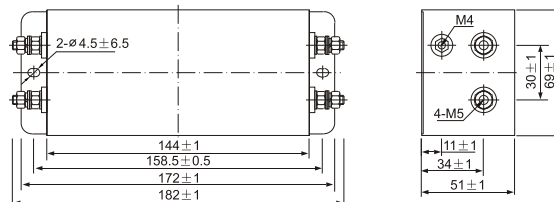


fig.10

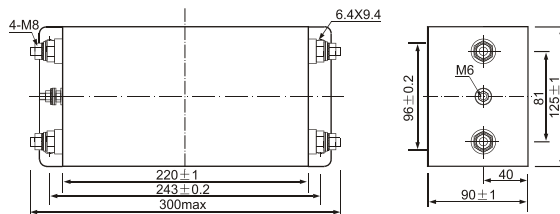
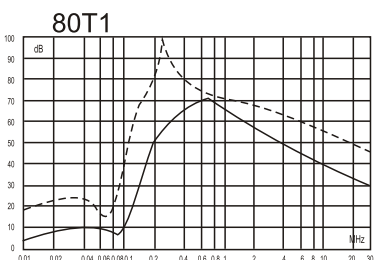
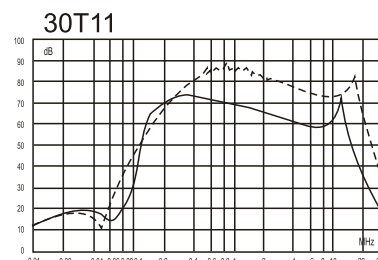
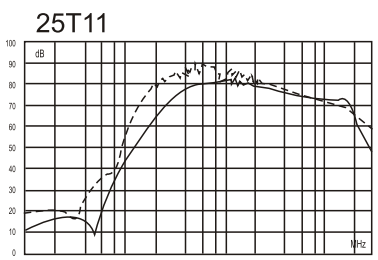
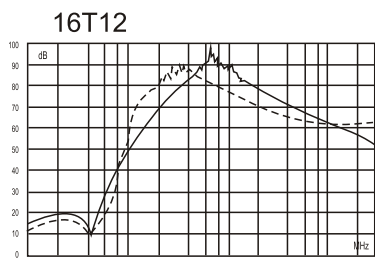
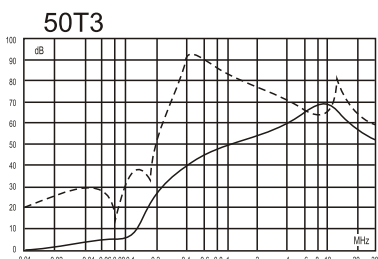
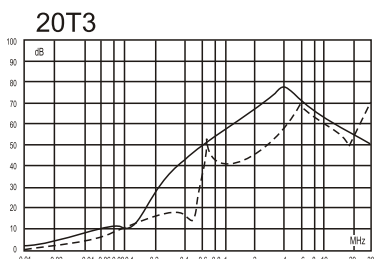
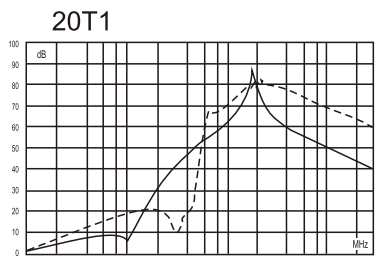
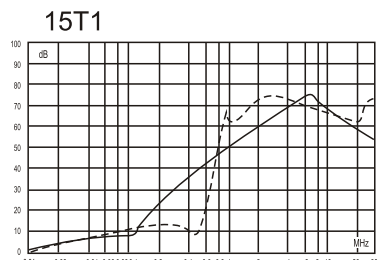
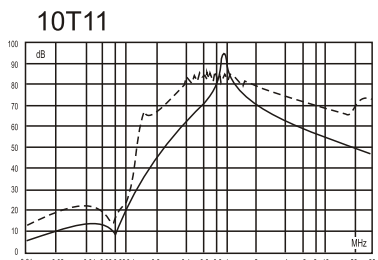
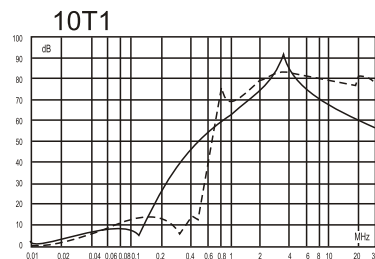
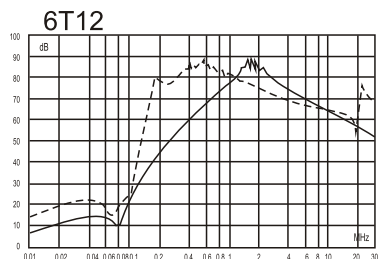
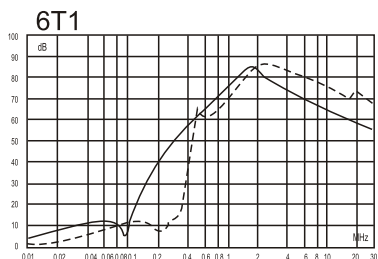
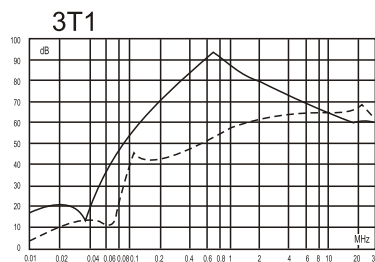
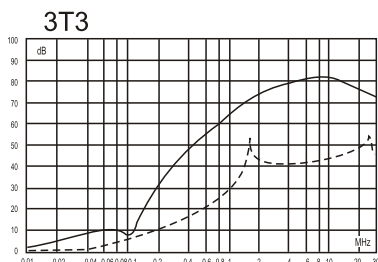
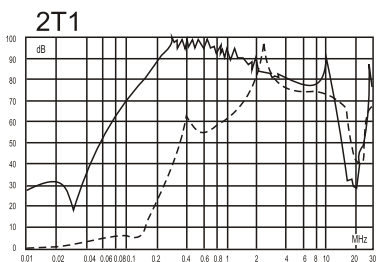


fig.11

插入损耗 Insertion Loss in dB

(50 Ω 测量系统, IEC/CISPR No.17 号出版物 Measured in 50 Ω system, as IEC/CISPR No. 17)



—— 共模(Common Mode) - - - - 差模(Differential Mode)