



## TH 系列

### TH Series

#### 特点 Features

- 含差模线圈的高性能电源滤波器  
High performance filters with differential mode choke
- 泄露电流小  
Low leakage current

#### 应用 Applications

- 用于大多数数字设备(尤其是开关电源), 用来抑制连续或间隙性脉冲干扰, 尤其适用于低阻抗负载场合  
TH Series are available for digital systems(particularly for switching power supplies) to suppress the continuity or intermittent pulse interference. TH Series are well suited for low impedance loads environments exist

#### 技术参数 Technical Data

额定电压 Rated Voltage	120/250VAC
工作频率 Operating Frequency	50/60Hz
额定电流 Rated Current	1A-100A
耐压试验:(一分钟) Test Voltage (1min)	1500VDC (line/line) 1500VAC (line/ground)
气候类别 Climatic Category	25/085/21

型号 Model	端子方式 Terminal		额定电流 Rated Current (A)	接地电容量 Ground Capacitance (nF)	泄漏电流 Leakage Current ≤(mA)	放电电阻 Discharge Resistance (MΩ)	电路图 Circuit Diagram fig.	外形尺寸 Dimension fig.
	入 Input	出 Output						
DL-1TH1			1	3.3	0.5	1	1	1
DL-6TH1			6	3.3	0.5	1	1	2
DL-10TH3			10	3.3	0.5	1	1	3
DL-15TH1			15	3.3	0.5	1	2	4
DL-20TH1			20	3.3	0.5	1	2	4
DL-30TH1			30	3.3	0.5	1	2	4
DL-100TH1			100	6.8	1.0	1	2	5



## 电原理图 Typical Circuit Diagram

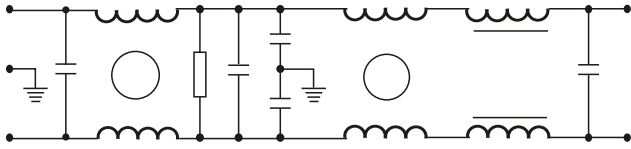


fig.1

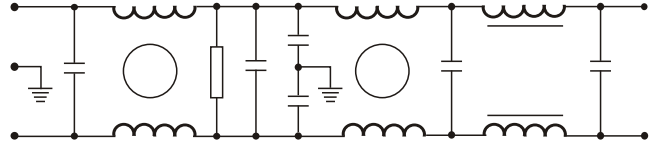


fig.2

## 外形尺寸 Outline Drawing and Dimensions (mm):

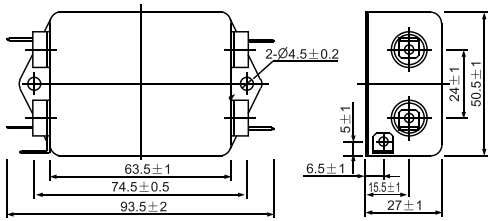


fig.1

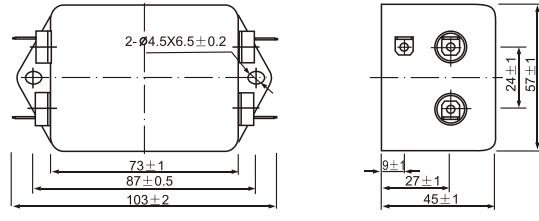


fig.2

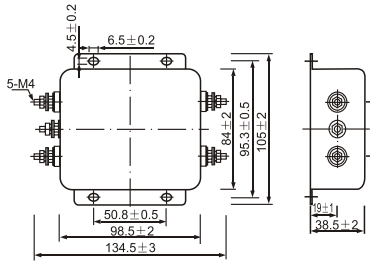


fig.3

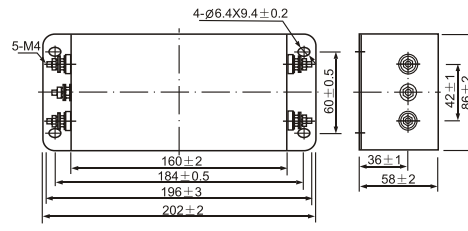


fig.4

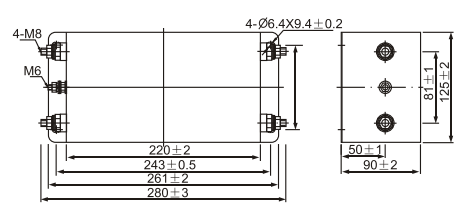
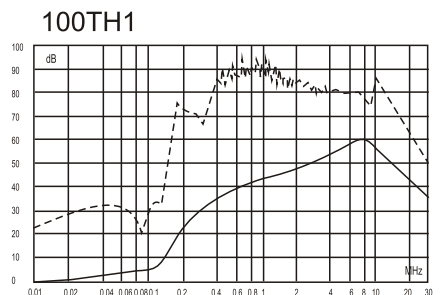
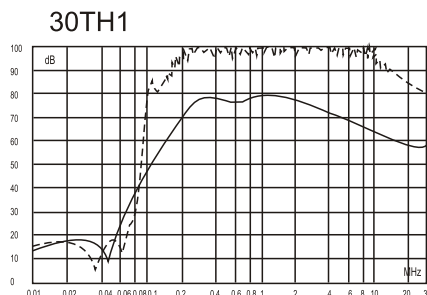
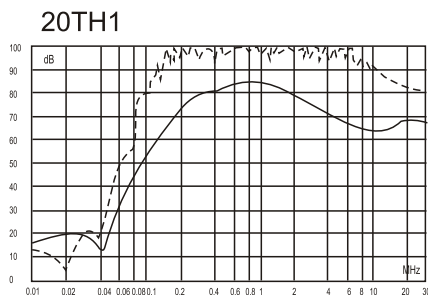
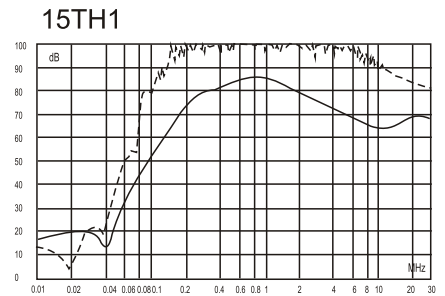
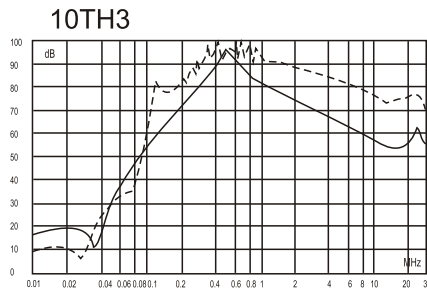
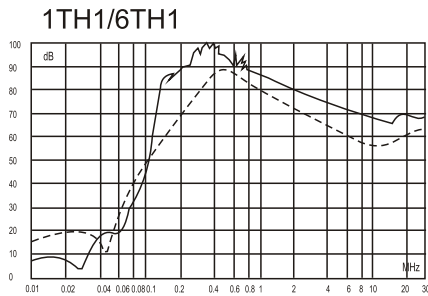


fig.5

## 插入损耗 Insertion Loss in dB

(50 Ω 测量系统, IEC/CISPR No. 17 号出版物 Measured in 50 Ω system, as IEC/CISPR No.17)



—— 共模(Common Mode)  
 ..... 差模(Differential Mode)

